



81 KNUTSFORD ROAD

WILMSLOW

- 5 Bedrooms
- 4 Bathrooms
- Garage Parking
- Electric Gates
- December Completion
- EV Charging Point

CONTACT US
0161 529 9922

£1,500,000

VISIT OUR WEBSITE
www.spsols.co.uk

81 KNUTSFORD ROAD

3300 square foot of modern beauty!



Luxury Specification

Offering a best in class finish, 81 Knutsford Road's impressive specification which includes Siematic Kitchens with Neff Appliances and quartz worktops. The property also benefits from underfloor heating throughout the ground floor.



Exceptional Quality

Led by accomplished and experienced construction professionals, Homes by Oliver James partners with talented architects, engineers and craftsmen who have invested time perfecting their passion and can demonstrate a commitment to delivering excellence in their field. The company has amassed an enviable portfolio of high-quality residential projects crafted as private commissions and speculative developments



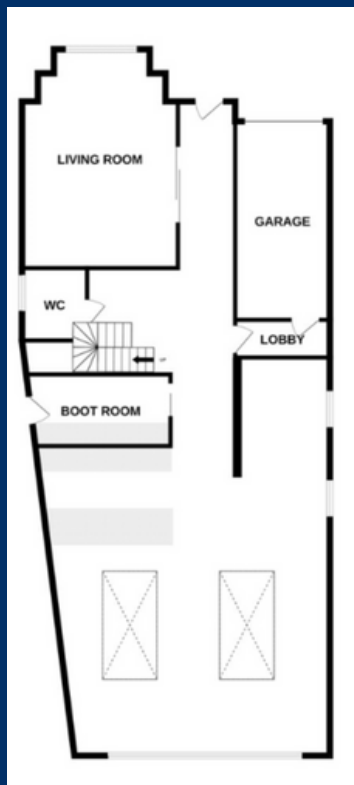
81 KNUTSFORD ROAD

WILMSLOW



Location

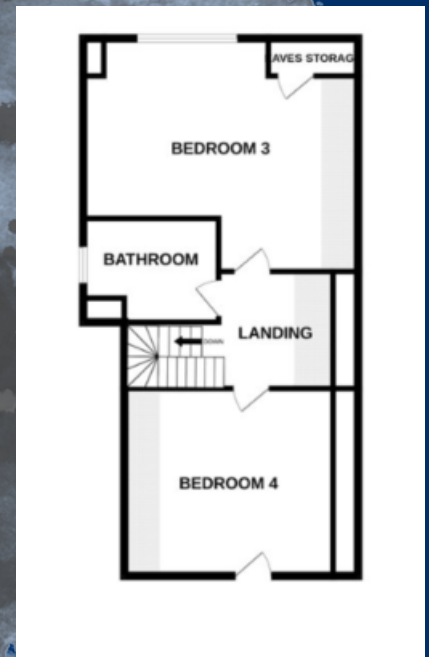
81 Knutsford Road is located in the highly desirable town of Wilmslow. Just a 15 minute walk away from the town centre and easy access to sporting facilities such as Lindow Cricket Club and Alderley Edge Golf Club. Furthermore, Larger shopping and recreational facilities such as Marks & Spencer, John Lewis, golf clubs and fitness centre are within a 5-15 minute drive.



Ground Floor



First Floor



Second Floor

